

## Ultra Low Capacitance TVS/ESD Protection Diode

### DESCRIPTION

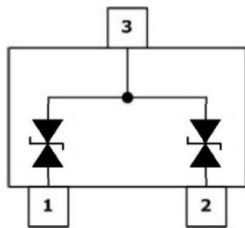
GESD0502T5CU is an ultra-low capacitance Transient Voltage Suppressor (TVS) designed to provide electrostatic discharge (ESD) protection for high-speed data interfaces. With typical capacitance of 1.5pF (I/O to I/O) only, GESD0502T5CU is designed to protect parasitic-sensitive systems against over-voltage and over-current transient events. It complies with IEC 61000-4-2 (ESD), Level 4 ( $\pm 15\text{kV}$  air,  $\pm 8\text{kV}$  contact discharge), IEC 61000-4-4 (electrical fast transient - EFT) (40A, 5/50 ns), very fast charged device model (CDM) ESD and cable discharge event (CDE), etc.

GESD0502T5CU uses small SOT-523 package. Each GESD0502T5CU device can protect two high-speed data lines. The combined features of low capacitance, small size and high ESD robustness make GESD0502T5CU ideal for high-speed data port and high-frequency line applications. The low clamping voltage of the GESD0502T5CU guarantees a minimum stress on the protected IC.

### ORDERING INFORMATION

- ✧ Device: GESD0502T5CU
- ✧ Package: SOT-523
- ✧ Marking: 52CU
- ✧ Material: Halogen free
- ✧ Packing: Tape & Reel
- ✧ Quantity per reel: 3,000pcs

### PIN CONFIGURATION



### FEATURES

- ✧ Transient protection for high-speed data lines  
IEC 61000-4-2 (ESD)  $\pm 15\text{kV}$  (Air)  
 $\pm 8\text{kV}$  (Contact)
- IEC 61000-4-4 (EFT) 40A (5/50 ns)  
Cable Discharge Event (CDE)
- ✧ Small package (1.6mm×0.8mm×0.75mm)
- ✧ Protects two data lines
- ✧ Low capacitance: 1.5pF Typical (I/O-I/O)
- ✧ Low leakage current
- ✧ Low clamping voltage

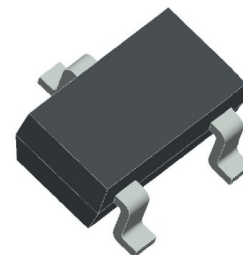
### MACHANICAL DATA

- ✧ SOT-523 package
- ✧ Flammability Rating: UL 94V-0
- ✧ Packaging: Tape and Reel
- ✧ High temperature soldering guaranteed: 260/10s
- ✧ Reel size: 7 inch
- ✧ MSL1

### APPLICATIONS

- ✧ Serial ATA
- ✧ Desktops, Servers and Notebooks
- ✧ PCI Express
- ✧ MDDI Ports
- ✧ USB Data Line Protection
- ✧ Digital Visual Interfaces

### PACKAGE OUTLINE



## Ultra Low Capacitance TVS/ESD Protection Diode

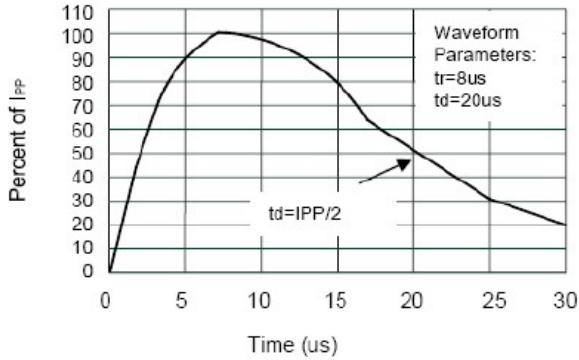
### ABSOLUTE MAXIMUM RATING

Symbol	Parameter	Value	Units
$P_{PP}$	Peak Pulse Power (8/20 $\mu$ s)	28	W
$V_{ESD}$	ESD per IEC 61000-4-2 (Air) ESD per IEC 61000-4-2 (Contact)	$\pm 15$ $\pm 8$	kV
$T_{OPT}$	Operating Temperature	-55/+150	$^{\circ}$ C
$T_{STG}$	Storage Temperature	-55/+150	$^{\circ}$ C

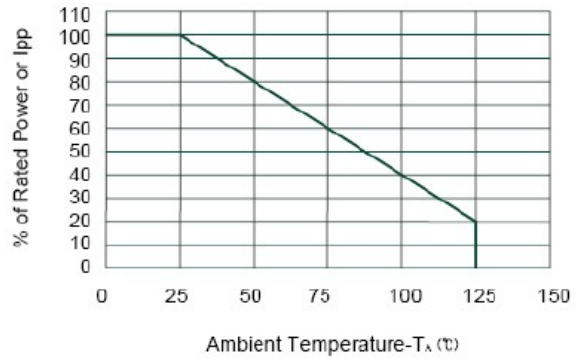
### ELECTRICAL CHARACTERISTICS ( $T_{amb}=25^{\circ}$ C)

Symbol	Parameter	Test Condition	Min	Typ	Max	Units
$V_{RWM}$	Reverse Working Voltage	I/O to GND			5.0	V
$V_{BR}$	Reverse Breakdown Voltage	$I_T = 1\text{mA}$ Between I/O and GND	5.6		9.4	V
$I_R$	Reverse Leakage Current	$V_{RWM} = 5\text{V}$ Between I/O and GND			1	$\mu$ A
$V_C$	Clamping Voltage	$I_{PP} = 1\text{A}$ , $t_p = 8/20\mu\text{s}$ Between I/O and GND			10.5	V
		$I_{PP} = 2\text{A}$ , $t_p = 8/20\mu\text{s}$ Between I/O and GND			14	V
$C_T$	Total Capacitance	$V_R = 0\text{V}$ , $f = 1\text{MHz}$ Between I/O and GND		3.0	4.0	pF
		$V_R = 0\text{V}$ , $f = 1\text{MHz}$ Between I/O and I/O		1.5	2.5	pF

### ELECTRICAL CHARACTERISTICS CURVE

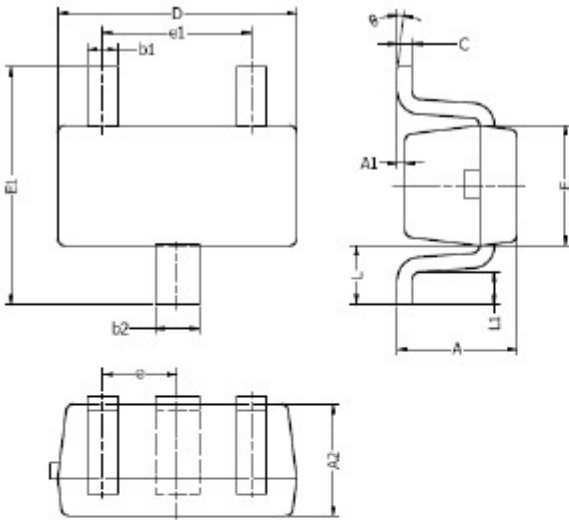


Pulse Waveform



Power Derating Curve

### SOT-523 PACKAGE OUTLINE DIMENSIONS



DIM	MILLIMETERS		INCHES	
	MIN	MAX	MIN	MAX
A	0.70	0.90	0.028	0.035
A1	0.00	0.10	0.000	0.004
A2	0.70	0.80	0.028	0.031
b1	0.15	0.25	0.006	0.010
b2	0.25	0.35	0.010	0.014
c	0.10	0.20	0.004	0.008
D	1.50	1.70	0.059	0.087
E	0.70	0.90	0.028	0.035
E1	1.45	1.75	0.057	0.089
e	0.50 TYP.		0.020 TYP.	
e1	0.90	1.10	0.035	0.043
L	0.40 REF.		0.016 REF.	
L1	0.10	0.30	0.004	0.012
θ	0°	8°	0°	8°

Typical Soldering Pattern:

